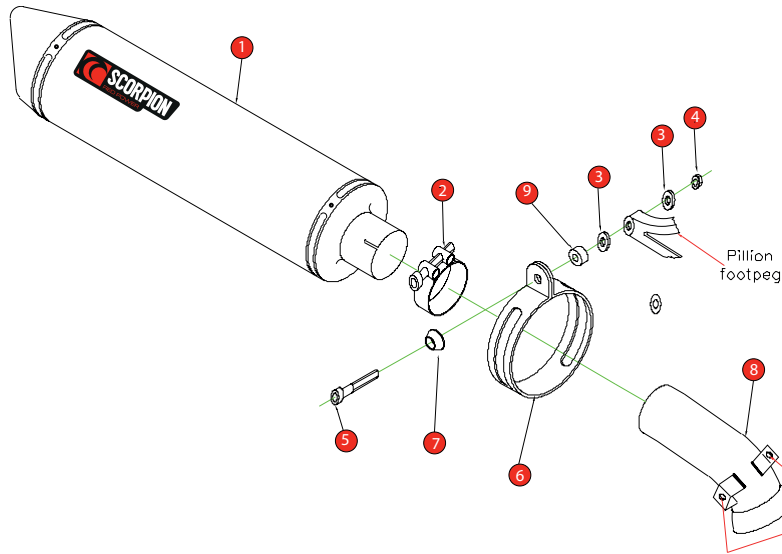


Box: PLOCK 1

BIKE	BMW K1300	PART NO.	EBM - 67
YEAR	2009-2016	FIT KITS	OVAL O - Z039.11397
NOTES	Use standard fittings where not supplied Remove standard gasket if fitted.	DB-Killer	SCEXDBK11 - (Type A)



Remove clips off original connecting pipe and locate on Item 8 brackets, re-mount original heatshield using original bolts.

- | | |
|--|----------------------------|
| 1 350mm Silencer ESC 177 | 8 Connecting Pipe CP594 |
| 2 59 - 63mm Band Clamp (Z016.10001) | 9 10mm Spacer (Z026.10004) |
| 3 2 x M8 x 30mm Washer (Z017.12754) | |
| 4 M8 Nyloc Nut (Z017.10062) | |
| 5 M8 x 50mm Cap Head Bolt (Z017.10078) | |
| 6 Oval Composite Strap (Z038.10088) | |
| 7 Aluminium Bolt Finisher (Z026.20068) | |

E-MARK ROUND	N/A
E-MARK OVAL	BSAU 193a 1990/t3
ISSUE NO.	3
DATE	28/09/2018
AUTHORISED	J.Harkin
CHECKED	

NOTE: ENSURE SCORPION SYSTEM IS CLEAR OF MOVING PARTS AND ALL ORIGINAL FUNCTIONS WORK CORRECTLY.



A) Remove original exhaust from bike, taking care to keep all original components in a safe place.

B) Refit Scorpion exhaust as per line diagram above.

C) When fitted take bike for a short ride to ensure all functions are correct.

D) When bike & exhaust are cool enough check all nuts and bolts are still secure.

