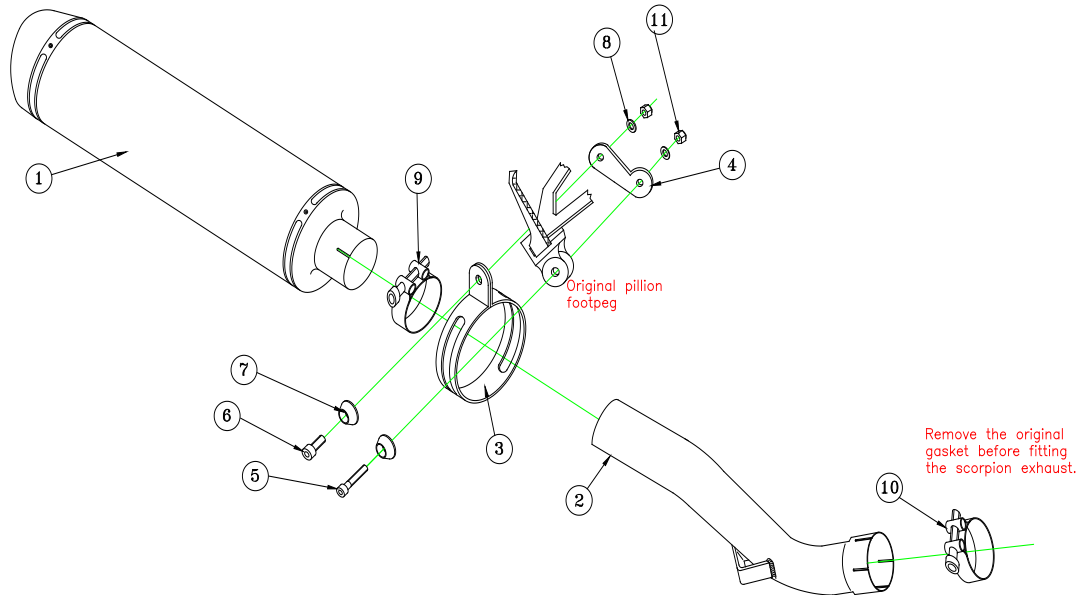


BIKE	HONDA VFR1200F (with panniers fitted)	PART NO.	EHA - 105
YEAR	2010 - 2015	FIT KITS	OVAL Z039.11396
NOTES	Use standard fittings where not supplied Remove standard gasket if fitted.	DB-Killer	SCEXDBK11 - (Type A)

If bike is fitted with a centre stand and the bump stop rubber is on original exhaust, remove it and re-fit to the centre stand. This should then line up with the bracket on item 2



- 1 350mm Silencer ESC 171
- 2 Connecting Pipe CP590
- 3 Composite silencer strap (Z038.10088)
- 4 Mounting bracket (Z015.20931)
- 5 M8 x 45 Cap head bolt (Z017.10077)
- 6 M8 x 25 Cap head bolt (Z017.10073)
- 7 2 x Alloy Bolt Finisher (Z026.20068)

- 8 2 x M8 x 17 washer (Z017.10831)
- 9 51-55mm Band Clamp (Z016.10002)
- 10 47-51mm Band Clamp (Z016.10003)
- 11 2 x M8 Nyloc nuts (Z017.10062)

E-MARK OVAL	SCDB-OS e4 2072
ISSUE NO.	05
DATE	17/10/2018
AUTHORISED	J.Harkin
CHECKED	

NOTE: ENSURE SCORPION SYSTEM IS CLEAR OF MOVING PARTS AND ALL ORIGINAL FUNCTIONS WORK CORRECTLY.



Servo fitting instructions follow on next page.

Box: PLOCK 1

BIKE	HONDA VFR1200F (with panniers fitted)	PART NO.	EHA - 105
YEAR	2010 - 2015	FIT KITS	OVAL Z039.11396
NOTES	If bike is fitted with a centre stand and the bump stop rubber is on original exhaust, remove it and re-fit to the centre stand. This should then line up with the bracket on item 2	FEATURES	

CONTINUED FROM OVERLEAF:



A) Remove seat, remove right hand side panel as shown in pictures A & B.

B) Remove servo cable from wheel. Thread cable out and leave connected to original Honda silencer. Replace side panel and seat.

C) Remove servo cable from wheel. Thread cable out and leave connected to original Honda silencer. Replace side panel and seat.



After removing original silencer assemble Scorpion components as per line diagram.