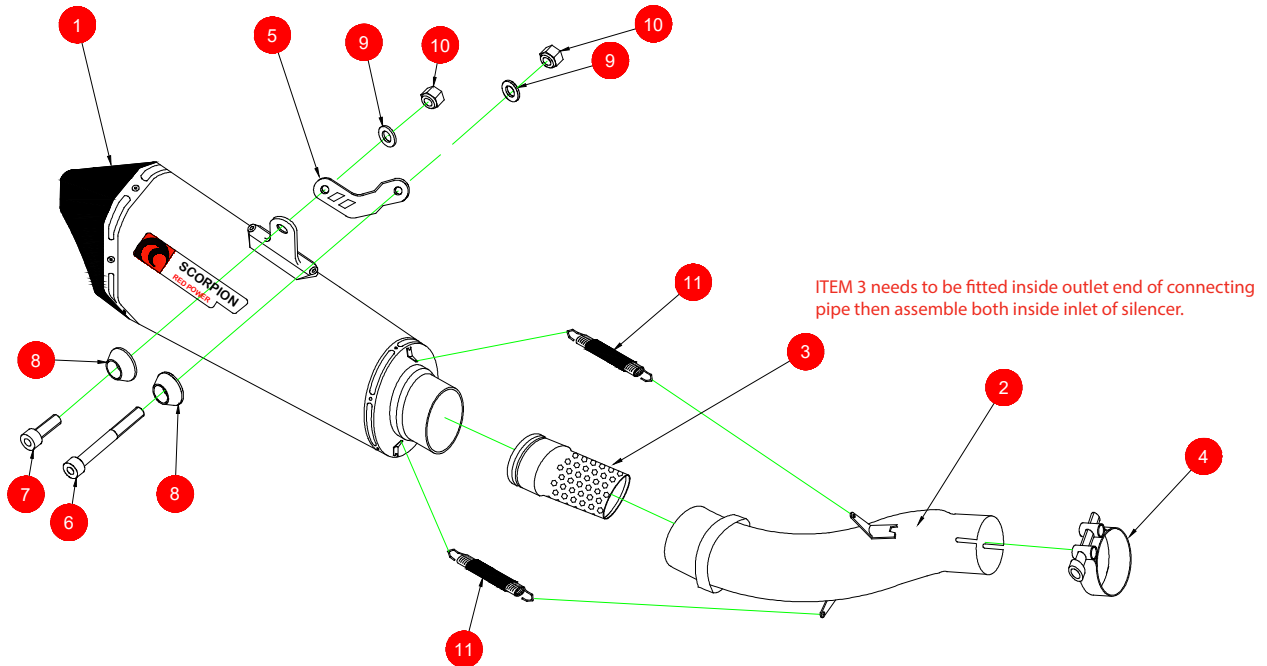


Box: PLOCK 1

BIKE	KAWASAKI NINJA 300 KAWASAKI Z300	PART NO.	RKA-95
YEAR	Ninja :- 2012 - 2015 Z300 :- 2015 - 2016	FIT KITS	Z039.20474
NOTES	Use standard fittings where not supplied Remove standard gasket if fitted.	DB-Killer	SCEXDBK23 - (Type V)



- | | |
|--------------------------------------|---|
| 1 Serket Taper Silencer RS231 | 8 2 x Aluminium Bolt Finishers (Z026.20068) |
| 2 Connecting Pipe Cp656 | 9 2 x M8x17mm Washers (Z017.10831) |
| 3 Connecting Pipe Flute (Z028.20188) | 10 2 x M8 Nyloc Nuts (Z017.10062) |
| 4 37-40mm Band Clamp (Z016.10006) | 11 2 x Rubber Coated Springs (Z028.10030) |
| 5 Mounting Bracket (Z015.31027) | |
| 6 M8x60mm Cap Head Bolt (Z017.10080) | |
| 7 M8x20mm Cap Head Bolt (Z017.10072) | |

CLASSIFICATION	Closed Circuit Product
HOMOLOGATED	No
ISSUE NO.	04
DATE	22/09/21
AUTHORISED	M.Ydlibi
CHECKED	

NOTE: ENSURE SCORPION SYSTEM IS CLEAR OF MOVING PARTS AND ALL ORIGINAL FUNCTIONS WORK CORRECTLY.



A) Remove original exhaust.
Taking care not to damage or lose any of the original parts.

B) Fit Scorpion Exhaust as per line diagram above.

C) Take bike out for short test run, on return allow exhaust to cool and check that all nuts and bolts are tight.

Box: PLOCK 1

BIKE	KAWASAKI NINJA 300 KAWASAKI Z300	PART NO.	RKA-95
YEAR	2012 - Current 2015 - Current	FIT KITS	Z039.20474
NOTES		FEATURES	

Thank you for purchasing your Scorpion Silencer.

Care of your exhaust: Please refrain from cleaning silencer with heavy solvents or abrasives!

Vielen Dank für den Kauf eines Scorpion Schalldämpfers! Pflegehinweis: Bitte verwenden Sie niemals Scheuermittel oder aggressive Reiniger zur Pflege Ihres Auspuffes!

Merci d'avoir choisi un échappement Scorpion.

Entretien de votre silencieux: Ne pas utiliser de solvants ou de produits abrasifs!

"Muchas gracias por adquirir un Silencioso Scorpion. Le recomendamos no limpiar el silencioso con productos abrasivos o aquellos que contengan disolventes."