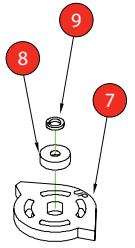
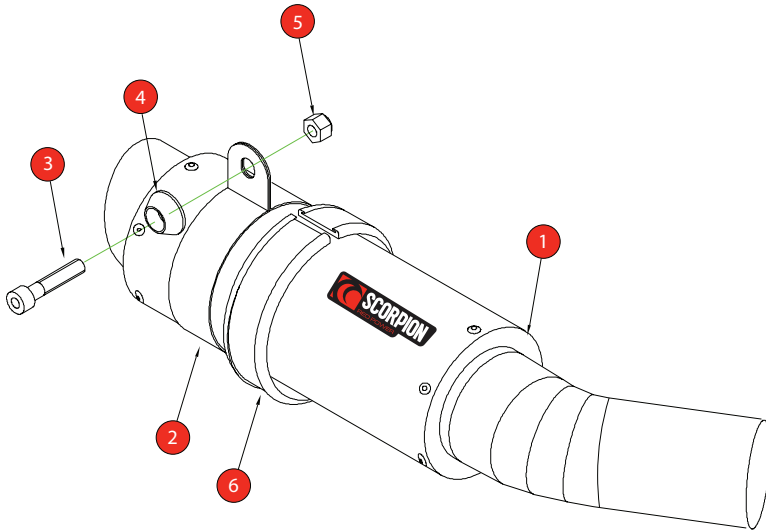


Box: PLOCK 1

BIKE	KAWASAKI ZX-10	PART NO.	KA-1000
YEAR	2008 - 2010	FIT KITS	ROUND Z039.10387
NOTES	Use standard fittings where not supplied Remove standard gasket if fitted.	DB-Killer	SCEXDBK28 - (Type EE)



DO NOT TURN ON BIKE UNTIL INSTALLATION IS COMPLETE AND SERVO WHEEL HAS BE FULLY INSTALLED.

- | | |
|--|---------------------------------|
| 1 225mm RP-1 GP Slencer SC160 with integrated CP 584 | 7 Servo Wheel (Z007.10955) |
| 2 Titanium Silencer Strap (Z028.10013) | 8 Aluminium collar (Z026.20045) |
| 3 M8 x 35mm Cap Head Bolt (Z017.10075) | 9 M6 split washer (Z017.10027) |
| 4 1 off Bolt Finisher (Z026.20068) | |
| 5 M8 Nyloc nut (Z017.10062) | |
| 6 Square edge rubber (Z029.10024) | |

E-MARK	KA80 e4 2363 ©
ISSUE NO.	05
DATE	17/10/2018
AUTHORISED	J.Harkin
CHECKED	

NOTE: ENSURE SCORPION SYSTEM IS CLEAR OF MOVING PARTS AND ALL ORIGINAL FUNCTIONS WORK CORRECTLY.



A) Remove original exhaust from bike, taking care to keep all original components in a safe place.

B) Refit Scorpion exhaust as per line diagram above.

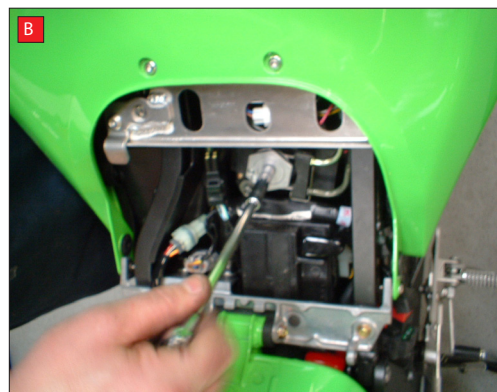
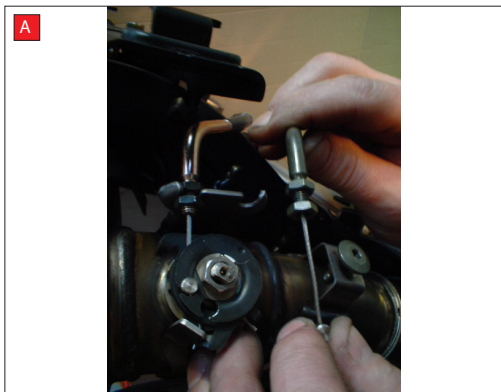
C) When fitted take bike for a short ride to ensure all functions are correct.

D) When bike & exhaust are coll enough check all nuts and bolts are still secure.

Box: PLOCK 1

BIKE	KAWASAKI ZX10	PART NO.	KA-1000
YEAR	2008 - 2010	FIT KITS	ROUND Z039.10387
NOTES		FEATURES	

CONTINUED FROM OVERLEAF:



A) Disconnect cables on exhaust valve and leave loose.

B) To disconnect cables at the servo box end, you have to remove the hexagonal wheel, without turning it's shaft. Remove bolt in centre of hexagonal wheel using an 8mm socket. Support wheel if tight.

C) Remove hexagonal wheel from shaft, retaining OE bolt. DO NOT turn shaft.

Remove spring clip retaining cables and completely remove the cables



D) The replacement wheel comes with an aluminium collar & spring washer that is secured in place with OE bolt – TIGHTEN TO 5ft/lb USING A TORQUE WRENCH.

The replacement wheel must be fitted with the etched letters "UP"

E IS RIGHT!
F IS WRONG!

