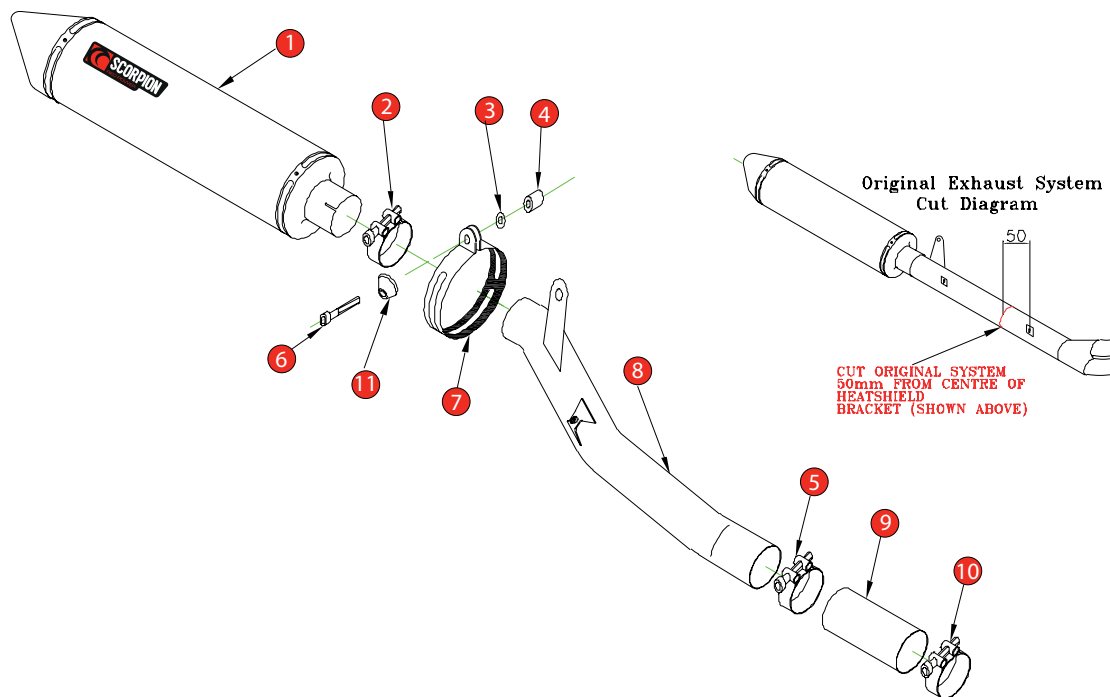


Box: PLOCK 2

BIKE	SUZUKI DL 650 V - STROM	PART NO.	SI - 81
YEAR	2004 - 2006	FIT KITS	OVAL Z039.11084
NOTES		DB-Killer	SCEXDBK12 - (Type B)



- | | |
|--|---|
| 1 450mm Silencer ESC 94 | 8 Connecting Pipe CP 266 |
| 2 51-55mm Band Clamp (Z016.10002) | 9 Re-connecting Sleeve CP328 |
| 3 2 x M8 x 17mm Washers (Z017.10831) | 10 43-47mm Band Clamp (Z016.10008) |
| 4 45mm Aluminium Spacer (Z026.10011) | 11 Aluminium Bolt Finisher (Z026.20068) |
| 5 47-51mm Band Clamp (Z016.10003) | 12 Photo fitting instructions |
| 6 M8 x 90mm Cap Head Bolt (Z017.10085) | |
| 7 Composite Strap (Z038.10088) | |

E-MARK OVAL	SCDB-UC [e4] 2106
ISSUE NO.	11
DATE	19/10/2018
AUTHORISED	J.Harkin
CHECKED	

NOTE: ENSURE SCORPION SYSTEM IS CLEAR OF MOVING PARTS AND ALL ORIGINAL FUNCTIONS WORK CORRECTLY.

A) Remove original exhaust from bike, taking care to keep all original components in a safe place.

B) Refit Scorpion exhaust as per line diagram above.

C) When fitted take bike for a short ride to ensure all functions are correct.

D) When bike & exhaust are cool enough check all nuts and bolts are still secure.