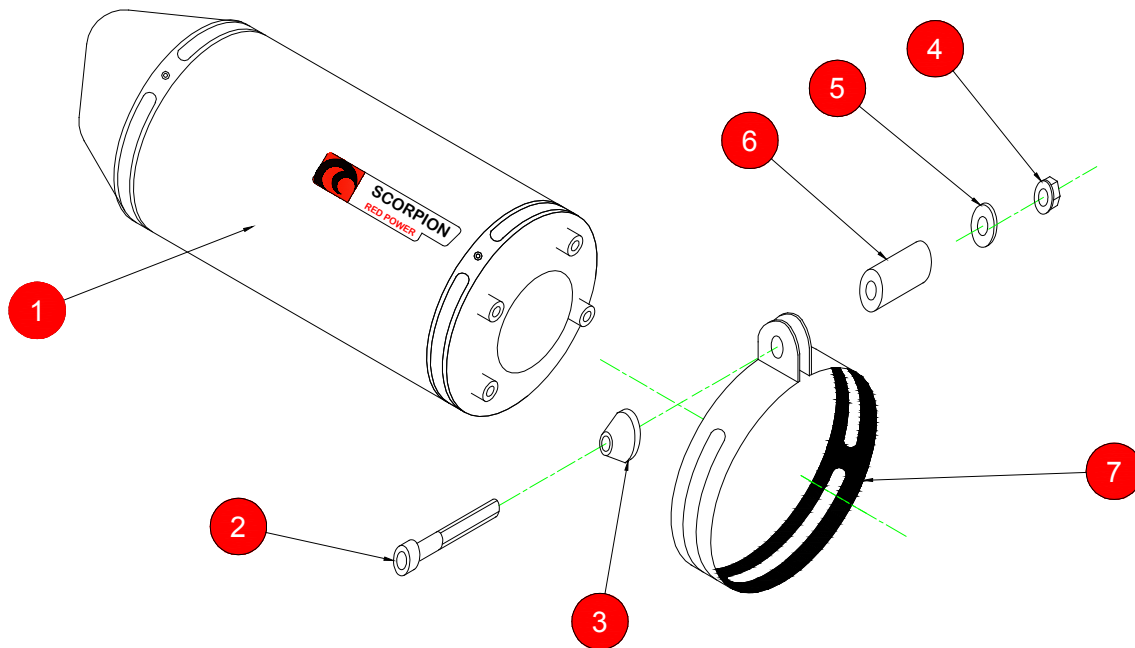


Box: PLOCK 1

BIKE	SUZUKI GSXR 600/750 Y-K CARBINE	PART NO.	ESI - 91
YEAR	2000 - 2005	FIT KITS	OVAL Z039.11068
NOTES		DB-Killer	SCEXDBK12 - (Type B)



- 1 225mm Silencer (O-Z040.18H)
- 2 M8 x 50mm Cap Head Bolt (Z017.10078)
- 3 Aluminium Bolt Finisher (Z026.20068)
- 4 M8 Nyloc Nut (Z017.10802)
- 5 M8 Washer (Z017.10831)
- 6 15mm Aluminium Spacer (Z026.10005)
- 7 Composite Strap (Z038.10088)

E-MARK OVAL	BSAU 193a 1990/t3
ISSUE NO.	07
DATE	19/10/2018
AUTHORISED	J.Harkin
CHECKED	

NOTE: ENSURE SCORPION SYSTEM IS CLEAR OF MOVING PARTS AND ALL ORIGINAL FUNCTIONS WORK CORRECTLY.



A) Remove original exhaust from bike, taking care to keep all original components in a safe place.

B) Refit Scorpion exhaust as per line diagram above.

C) When fitted take bike for a short ride to ensure all functions are correct.

D) When bike & exhaust are cool enough check all nuts and bolts are still secure.