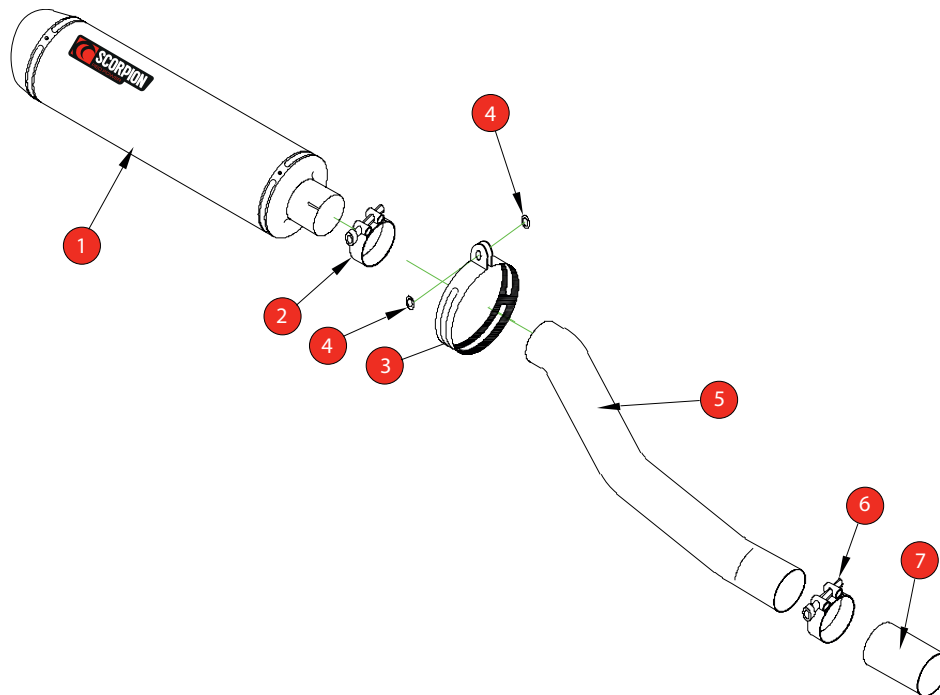


Box: PLOCK 1

BIKE	SUZUKI SV 650	PART NO.	ESI - 84
YEAR	2004-2015	FIT KITS	OVAL Z039.11082 // ROUND Z039.10082
NOTES	Item 7 required to re-fit OE exhaust system	DB-Killer	SCEXDBK12 - (Type B)



- | | |
|---|---------------------------------|
| 1 450mm Silencer ESC 94 | 8 Original Silencer Cut Diagram |
| 2 51-55mm Band Clamp (Z016.10002) | |
| 3 Composite Silencer Strap (R-Z038.10089)(O-Z038.10088) | |
| 4 2 x M8 x 25mm Washers (Z017.10825) | |
| 5 Connecting Pipe CP 325 | |
| 6 55-59mm Band Clamp (Z016.10004) | |
| 7 Re-connecting Sleeve CP327 | |

E-MARK	SCDB-UC e4 2106
ISSUE NO.	15
DATE	22/10/2018
AUTHORISED	J.Harkin
CHECKED	

NOTE: ENSURE SCORPION SYSTEM IS CLEAR OF MOVING PARTS AND ALL ORIGINAL FUNCTIONS WORK CORRECTLY.



A) Remove original exhaust from bike, taking care to keep all original components in a safe place.

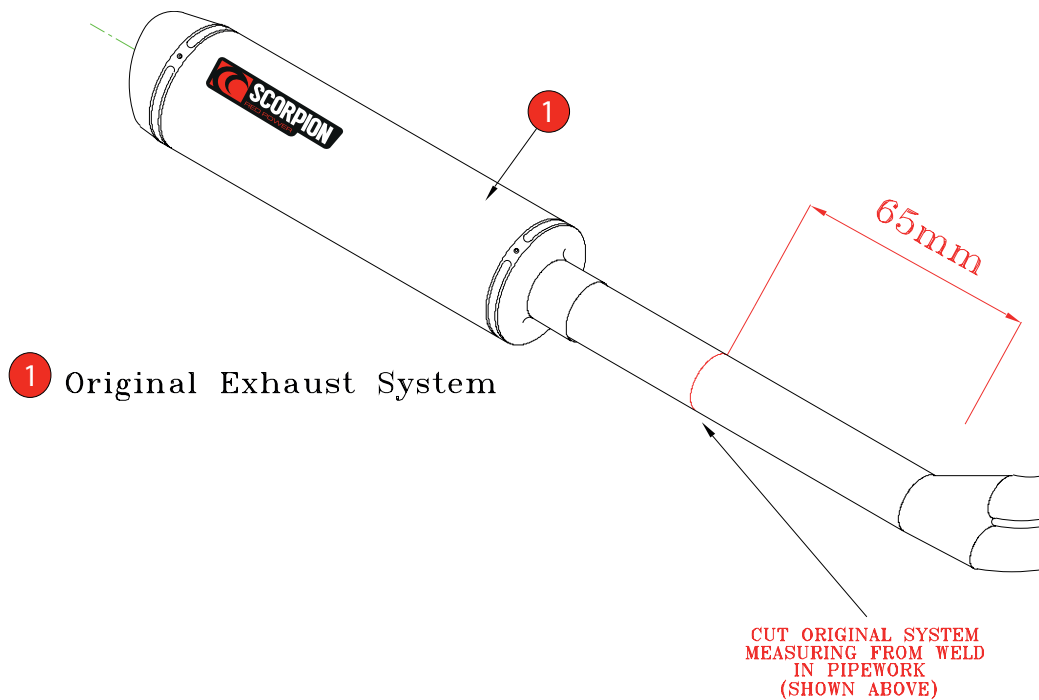
B) Refit Scorpion exhaust as per line diagram above.

C) When fitted take bike for a short ride to ensure all functions are correct.

D) When bike & exhaust are cool enough check all nuts and bolts are still secure.

Box: PLOCK 1

BIKE	SUZUKI SV 650	PART NO.	ESI - 84
YEAR	2004-2015	FIT KITS	OVAL Z039.11082 // ROUND Z039.10082
NOTES	PIPEWORK CUTTING INSTRUCTIONS	FEATURES	DB KILLER Z038.10120



- | | |
|---|--|
| 1 Use correct tools and check parts list | 5 Use a small amount of silicone to seal joints |
| 2 Saw off standard silencer 65mm back from weld in pipework,(as illustrated) Clean sawn edge. | 6 Tighten all fasteners and check that it is clear of all moving parts, & all original functions are working correctly |
| 3 Connector pipe CP-327 should only be used to re-fit std silencer if required. | 7 Ride for a short distance and re-tighten all fasteners |
| 4 Use rubber strap under silencer bracket to prevent damage to silencer | |

NOTE: ENSURE SCORPION SYSTEM IS CLEAR OF MOVING PARTS AND ALL ORIGINAL FUNCTIONS WORK CORRECTLY.