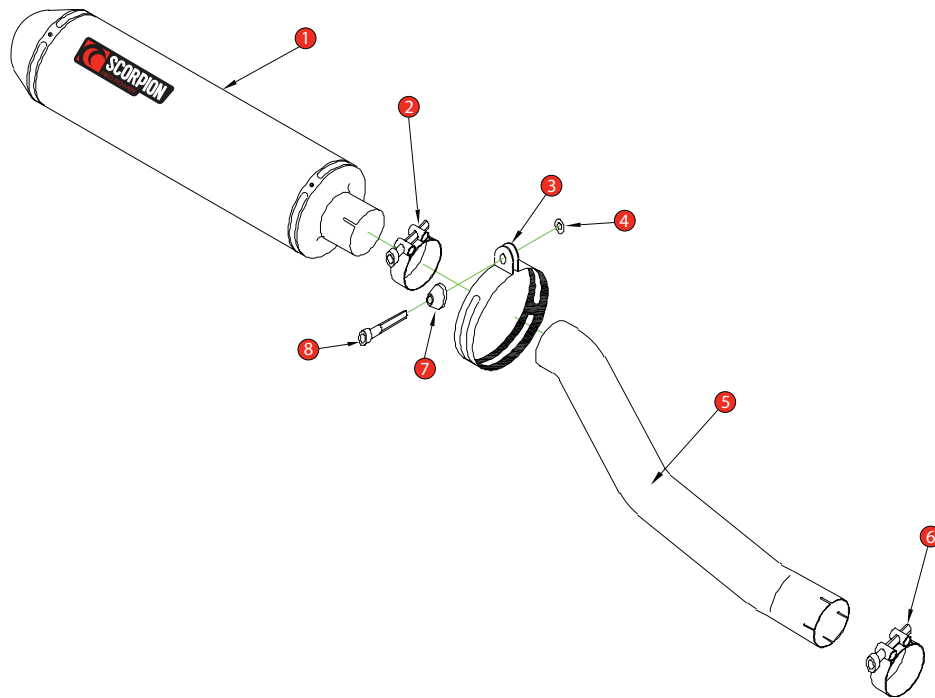


Box: PLOCK 1

BIKE	Yamaha YZF-R6	PART NO.	EYA-68
YEAR	2003-05	FIT KITS	OVAL Z039.11121 / ROUND Z039.10121
NOTES	Use standard fittings where not supplied <b>Remove standard gasket if fitted.</b>	DB-Killer	SCEXDBK12 - (Type B)



1	450mm Silencer ESC 50	8	M8 x 45mm Cap Head Bolt (Z017.10077)
2	51-55mm Band Clamp (Z016.10002)		
3	Composite Silencer Strap (R-Z038.10090)(O-Z038.10088)		
4	M8 x 25mm Washer (Z017.10825)		
5	Connecting Pipe CP 132		
6	55-59mm Band Clamp (Z016.10004)		
7	Alloy Bolt Finisher (Z026.20068)		

E-MARK ROUND	<a href="#">SCDB-RS</a> <a href="#">E4</a> 2035
E-MARK OVAL	<a href="#">SCDB-OS</a> <a href="#">E4</a> 2072
ISSUE NO.	09
DATE	23/10/2018
AUTHORISED	J.Harkin
CHECKED	

**NOTE:** ENSURE SCORPION SYSTEM IS CLEAR OF MOVING PARTS AND ALL ORIGINAL FUNCTIONS WORK CORRECTLY.



A) Remove original exhaust from bike, taking care to keep all original components in a safe place.

B) Refit Scorpion exhaust as per line diagram above.

C) When fitted take bike for a short ride to ensure all functions are correct.

D) When bike & exhaust are cool enough check all nuts and bolts are still secure.