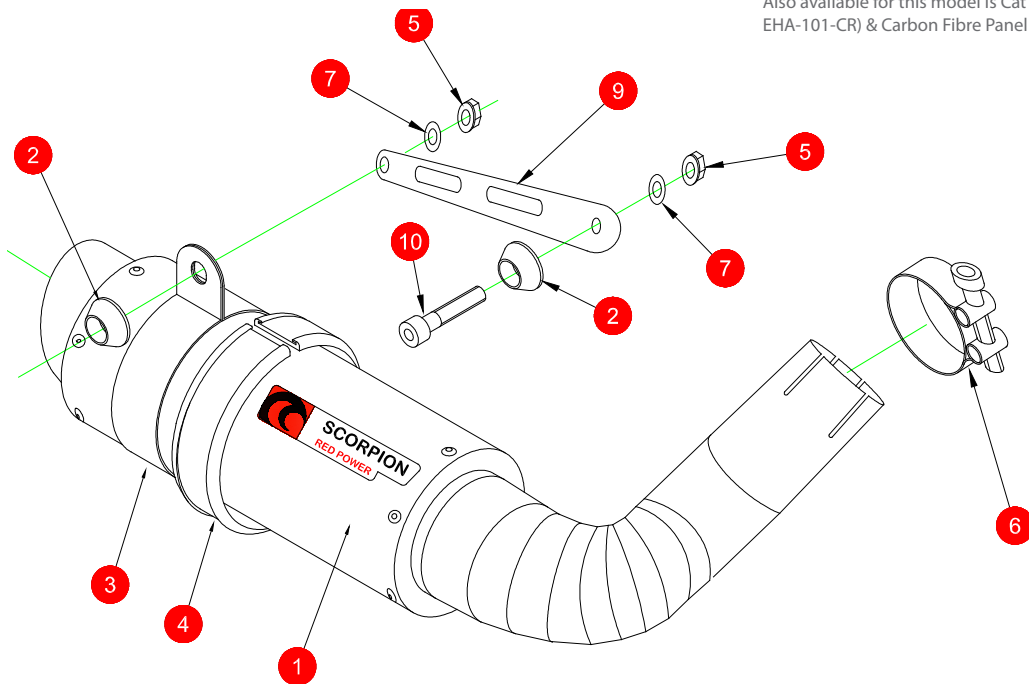




BIKE	HONDA CB 1000 R	PART NO.	HA-1002
YEAR	2008- 2017	FIT KITS	Z039.20449
NOTES	Use standard fittings where not supplied Remove standard gasket if fitted.	DB-Killer	SCEXDBK28 - (Type EE)

Also available for this model is Cat Replacement Pipe (PART No. EHA-101-CR) & Carbon Fibre Panel (PART No. EHA-101-CFP)



- | | |
|--|--|
| 1 RP1-GP Silencer with intergrated CP681 | 8 M8x25mm Cap Head Bolt (Z017.10073) |
| 2 2 x Alloy Bolt Finisher (Z026.20068) | 9 Silencer Mounting Bracket (Z015.30934) |
| 3 Titanium Silencer Strap (Z028.10013) | 10 M8x45mm Cap Head Bolt (Z017.10077) |
| 4 Square Edge Rubber (Z029.10024) | |
| 5 2 x M8 Nyloc Nuts (Z017.10062) | |
| 6 47-51mm Band Camp (Z016.10003) | |
| 7 2 x M8x17mm Washer (Z017.10831) | |

E-MARK	HA-101  2338 
ISSUE NO.	04
DATE	09/10/2018
AUTHORISED	J.Harkin
CHECKED	

NOTE: ENSURE SCORPION SYSTEM IS CLEAR OF MOVING PARTS AND ALL ORIGINAL FUNCTIONS WORK CORRECTLY.



A) Remove original exhaust from bike, taking care to keep all original components in a safe place.

B) Refit Scorpion exhaust as per line diagram above.

C) When fitted take bike for a short ride to ensure all functions are correct.

D) When bike & exhaust are cool enough check all nuts and bolts are still secure.